

**SATLINK**

USER'S MANUAL

**SATLINK**

**WS-6950**

USER'S MANUAL

---



---

## Table of Contents

---



---

<b>1.GUIDE</b> .....	01
1.1 Important Safety Instructions.....	01
1.2 Unpacking.....	02
1.3 PRODUCT OVERVIEW & ILLUSTRATION.....	02
1.4 INSTALLATION OF METER.....	05
<b>2.OUTLINE</b> .....	06
<b>3.THE MENU OSD INSTRUCTION</b> .....	06
<b>3.1 Search</b> .....	07
3.1.1 Satellite.....	07
3.1.2 LNB type.....	07
3.1.3 LOW FREQ / HIGH FREQ.....	07
3.1.4 TP Num.....	08
3.1.5 Frequency.....	08
3.1.6 Symbrate.....	08
3.1.7 Polarity.....	08
3.1.8 22K Tone.....	08
3.1.9 Longitude.....	08
3.1.10 My Longitude.....	08
3.1.11 My Latitude.....	08
3.1.0.1 Quick Search.....	08
<b>3.2 Satellite Install</b> .....	10
3.2.1 Sat Manager.....	10
3.2.2 TP Manager.....	15
<b>3.3 Multimedia</b> .....	16
3.3.1 Photo.....	16
3.3.2 Music.....	17

<b>3.4 System Setting</b> .....	17
3.4.1 OSD Language.....	18
3.4.2 KB-Back Light.....	18
3.4.3 SW Update.....	18
3.4.4 Set Default.....	18
3.4.5 GMT Usage .....	19
3.4.6 Time Zone.....	19
3.4.7 Set Date.....	19
3.4.8 Set Time.....	19
<b>3.5 Shortcut Buttons</b> .....	19
3.5.1 All Satellite.....	19
3.5.2 TELETEXT.....	19
3.5.3 SUBTITLE.....	20
3.5.4 TV List.....	20
3.5.5 TV Guidel.....	20
<b>4. Technical Specification</b> .....	21
<b>5. Trouble Shooting</b> .....	23

## 1 GUIDE

### 1.1 Important Safety Instructions

Thank you for choosing our product. Before installation, we would like to remind you some notes, which is very important for operating safely and properly, as follows:

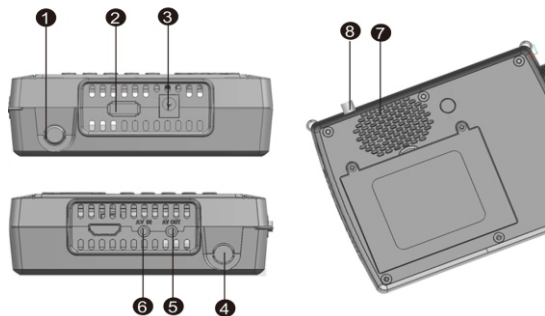
- Be sure to read this user manual before starting your operation.
- You must install the dish with correct direction and angle. If the dish is not working properly, contact your local dealer.
- When the unit is suddenly moved to a hot area from a cold area, it may cause some problems. In that case, turn off the power, and turn on again after 1-2 hours.
- Keep meter placed in clean space with sufficient ventilation.
- Do not cover the meter with or place it on a unit that emits heat.
- Clean the case by a soft cloth with a little washing liquid.
- Do not remove the cover.
- Do not let the unit exposed to extreme heat, cold or humid conditions.
- No liquids or any other materials to come inside of the unit.

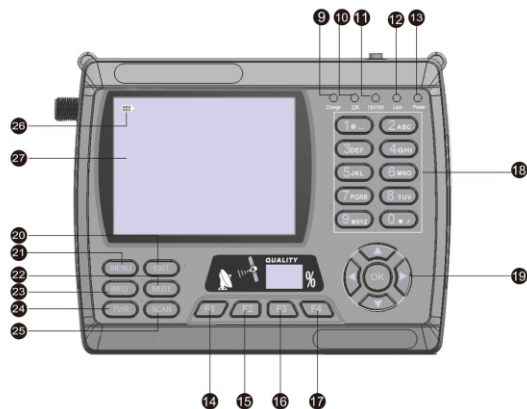
### 1.2 Unpacking Equipment

Open the package and make sure it includes all below items, if any is missing, please contact the reseller for replacement.


- 1.Digital Satellite Meter
- 2.User's manual
- 3.AV cable
- 4.Car charger cable
- 5.Adaptor
- 6.F connector
- 7.Carrying bag
- 8.Strap of carrying bag

### 1.3 Product Overview & Illustration





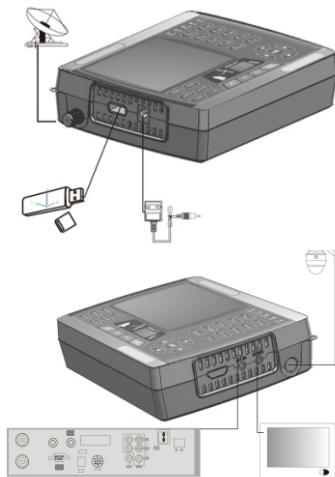
NO	Description	FUNCTION
1	LNB IN	Connect to satellite antenna cable
2	USB Port	Connect to USB memory
3	DC Slot	Connect to Adaptor Input
4	DC 12V OUTPUT	DC 12 output for extern equipment
5	AV OUT	Connect to AV port for TV
6	AV IN	Connect to AV port for meter
7	Speaker	Speaker Integrated
8	Power witch	Turn on/off meter

9	Charger (Note1)	Charger indicator light
10	22KHZ	22Khz indicator light
11	13V/18V	Vertical /Horizontal polarization voltage output light
12	LOCK	Signal lock indicator light
13	Power	Power indicator light
14	F1	1)Shows the Subtitle menu ; 2)TV/Radio switch
15	F2	1)Shows the EPG menu; 2)Audio select
16	F3	1)Shows the Favorite Manager menu; 2)lock beep alarm
17	F4	1)Shows Manager Channel menu; 2)TV system switch
18	0-9	Select channels or enter programming
19	NEVIGATION KEY	Volume Control or move cursor, channel or change, confirm etc
20	EXIT	Escape from present menu and save the settings
21	MENU	Show the main menu on the screen or jump back to previous menu in sub-menu setting conditions
22	MUTE	Enable or disable the audio output
23	INFO	To display channel status or various program information of current channel
24	TV/RADIO	Switch between TV and Radio mode
25	SCAN	'Quick Search' menu shortcut key
26	 (Note 2)	When power on the meter , displays the battery level
27	LCD Screen	Video display

**Note1:**When the adapter insert dc slot, Charging indicator scintillation three times, then the indicator is often bright, when the batteries charged sufficient, the charge indicator is going out.

**Note2:**When the battery is on power failure, a voice alarm, please a timely charge, do not continue to be used to avoid the internal battery runs out and shorten the usage time.

## 1.4 INSTALLATION OF METER



## 2. OUTLINE

- 3.5 Inch TFT LCD Screen Display
- Input Frequency: 950~2150MHz
- Input Level: -65~-25dBm
- Input Impedance: 75Ω
- Measurement Type: signal strength, quality; BER; S/N;PWR
- Search Mode: Auto, Blind, Manual
- Sound and Light Alarm for Locking Signal
- Auto Calculate Angle of AZ,EL
- Supporting DISEQC 1.0,1.1,1.2 and 22khz Tone
- LNB Power Supply:18/13V(IMax 400mA)
- DC 12 output for extern equipment,Imax(500mA)
- Support both AV out and AV in
- Speaker Integrated
- Max Operating Time:4 hours

## 3. THE MENU OSD INSTRUCTION

If you have installed and connected the cables of the meter, pressing MENU key to display the Main Menu.

- Search
- Install
- Multimedia
- System



Press the keys of ▲▼ to move the cursor up or down in the menu inter face, then use OK key to confirm a selection.

### 3.1 Search



**3.1.1 Satellite:** Press key enter the satellite list. Use ▲▼ key to move the cursor, then press OK key to select the satellite that you want.



**3.1.2 LNB type:** Press key, you can select single/Universal/UnicableSCRetc, according to your physical LNB type.

**3.1.3 LOW FREQ / HIGH FREQ:** Using the numeric keys or pressing keys enter the proper LNB frequency referring to your LNB.

**3.1.4 TP Num:** Press key into the TP list. Use ▲▼ key to move the cursor then press OK key to select the satellites that you want.



**3.1.5 Frequency:** Frequency of the current transport, Input the value by using the numeric keys.

**3.1.6 Symbrate:** Symbol rate of the current transport, Input the value by using the numeric keys.

**3.1.7 Polarity:** Press key to change Vertical or horizontal of polarization.

**3.1.8 22K Tone:** Press key to select 22K Tone ON/OFF

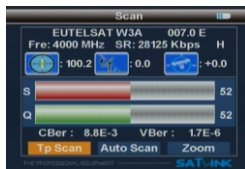
**3.1.9 Longitude:** Use the numerical keys to input Longitude of Satellite

**3.1.10 My Longitude:** Use the numerical keys to input Longitude of Local Region

**3.1.11 My Latitude:** Use the numerical keys to input Latitude of Local Region

#### 3.1.0.1 Quick Search

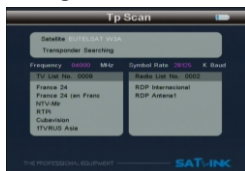
In the satellite search interface, pressing OK key will into the quick search.



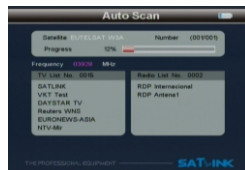
If you set the My Longitude and My Latitude, the angle of LNB, the orientation and elevation of antenna, all will display on the screen.

Press key to select Tp Scan, Auto Scan, Zoom, then press OK key into function.

■ **TP Scan:** According to the current TP, search channel



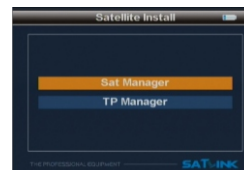
■ **Auto :** According to the user db of satellite, search channel.



■ **Zoom:** Enlarge showing the strength and quality



## 3.2 Satellite Install

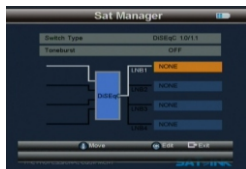


**3.2.1 Sat Manager:** Press “OK” button to enter the Sub-menu, and then set the state of the dish

**3.2.1.1 Switch type:** According to your switch type, the meter provides NONE, DiSEqC1.0/1.1, DiSEqC1.2/USALS, let you have exact information to direct your antenna toward a satellite. Press key to select switch type.

### 1.DiSEqC 1.0/1.1

Press ▲▼ keys to select LNB1/LNB2/LNB3/LNB4



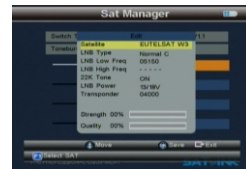
Press “OK” key to enter the Sub-Menu



Press “F1” key to select the desired satellite.



Press ▲▼ key to select the desired satellite, and press “OK” key, then you can see the information of the satellite you select.



## 2.DiSeqC 1.2/USALS

Press ▲▼ keys to select Position 01/ Position 02/ Position 03/ Position 04



Press “OK” key to enter the Sub-Menu





Press “F1” key to select the desired satellite.



Press ▲▼ key to select the desired satellite, and press “OK” key, then you can see the information of the satellite you select.



**3.2.1.2 Toneburst:** Press button to choose Toneburst mode OFF/ON

1. Select Switch Type on NONE, Toneburst mode ON



2. Select Switch Type on DiSEqC 1.0/1.1, Toneburst mode ON



3. Select Switch Type on DiSEqC 1.2/USALS



■ Press F1 key to Set Limit



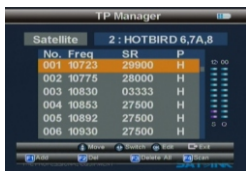
### ■ Press F2 key to Set Location



### ■ Press F3 key to Set LNB.



### 3.2.2 TP Manager



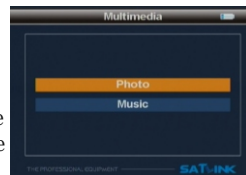
Press ◀▶ key to change satellite .Pressing OK/▲▼ key, switch to TP select

- Press F1 key to add TP.
- Press F2 /OK key to delete the current TP .
- Press F3 key to delete the ALL TP.
- Press F4 key to scan the current TP

### 3.3 Multimedia

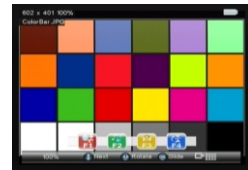
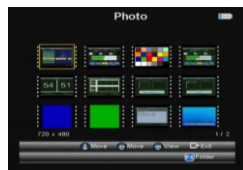
The meter intergrates USB port, which support the following device:

- USB portable harddisc
- USB memory



It will appear “storage device is inserted” when USBdevice is inserted to the USB port. the usb device has been recognized and can be use. Otherwise will appear “ Device was removed”.

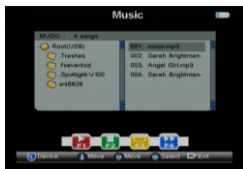
**3.3.1Photo:**Press ▲▼ key to select picture, then press OK key to play.



Press ▲▼ key to select picture, then press OK key to play.  
Press MENU key to appear playing bar.  
Press ◀▶ key to move the cursor, then press OK key to operate function.

There are Rotate, Delay set, ZOOM, Play/Pause, Previous Picture, Next picture, Stop.

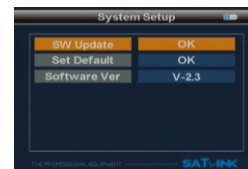
### 3.3.2 Music



Press ▲▼ key to select song, then press OK key to play.  
Press F1 key to Play/Pause music.  
Press F2 key to return music menu.  
Press F3 key to set music cycle mode  
Press F4 key to set music forward.  
Press ◀▶ key to control volume  
Press ▲▼ key to select the music you desire

## 3.4 System Setup

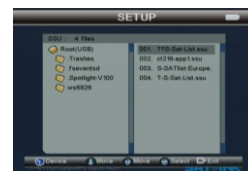
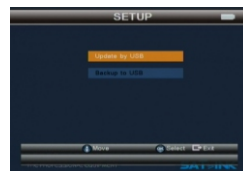
This menu consists of sub-menus as shown below:



3.4.1 OSD Language: Press ◀▶ key to select language

3.4.2 KB-Back Light

3.4.3 SW Update



To upgrade SW or Data through USB port.

To store the upgrading file in the external memory, and insert it into USB port, and then enter upgrade menu.

To select the file, it will automatically return back to the previous menu after upgrade.

3.4.4 Set Default: The Set Default allows user to restore the factory-reset values, when you press OK key, the system setup will be restored to the default values.

**Warning:** On selecting Set Default you will lost all of data and information, which was previous installed.

**3.4.5 GMT Usage:** Set the GMT parameter

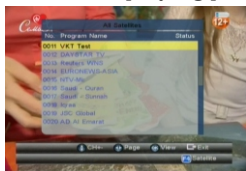
**3.4.6 Time Zone:** Press ◀▶ key to set Time Zone.

**3.4.7 Set Date:** Press the numeric key to set date

**3.4.8 Set Time:** Press the numeric key to set time.

### 3.5 Shortcut Buttons

**3.5.1 All Satellite:** Press “OK” key to enter the All Satellite interface when it's playing programs.



Press ▲▼ key to select the desired satellite, and press “OK” key.

**3.5.2 TELETEXT:** Press F1 key to enter the TELETEXT interface when it's playing programs, you can select the Teletext Language.



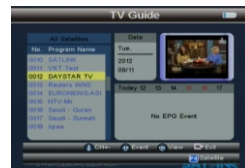
**3.5.3 SUBTITLE:** Press F2 key to enter the SUBTITLE interface when it's playing programs, you can select the Subtitle Language.



**3.5.4 TV List:** Press F3 key to enter the TV List interface when it's playing programs, you can operate according to the screen prompts



**3.5.5 TV Guide:** Press F4 key to enter the TV Guide interface when it's playing programs



## 4. Technical Specification

<b>TRANSMISSION STANDARDS</b>	
DVB-S	
<b>SATELLITE INPUT/DEMULATION</b>	
Connector Type	F Type
Input Frequency	950 to 2150 MHz
Signal Input Level	-65 to -25dBm
Band Switch Control	22KHz
LNB Supply	13V/18V, I <sub>max</sub> 400mA
Demodulation Type	QPSK, 8PSK
Symbol Rate	2<Rs<45 M band(SCPC/MCPC)
<b>LCD FEATURES</b>	
LCD Type	TFT TRANSMISSIVE
Number of Dots	320(RGB) x240
Active area (WxH)	70.08*52.56 mm <sup>2</sup>
<b>AV output interface</b>	
Connector Type	3.5 mm Jack
Video Output	CVBS
Audio output	Stereo Audio L/R output
<b>AV input interface</b>	
Connector Type	3.5 mm Jack
Video input	CVBS
Audio input	Stereo Audio L/R input
<b>AUDIO/VIDEO PROCESSING</b>	
Resolving rate	PAL-25 frame@720*576, NTSC-30 frame@720*480.
Signal compatibility	Support conversion for different video formats
Video Format	4:3, 16:9, By Pan & Scan and Letter Box conversion

Audio output mode	Stereo, Mono, R/L
<b>DATA SERVICE PORT</b>	
Connector	USB
Data protocol	USB2.0 interface
File management system	NTFS, FAT32, FAT16
file format	wma, mp3, mp4, avi, jpg, jpeg, bmp, img
<b>DC OUTPUT</b>	
DC 12V	I <sub>max</sub> :500mA
<b>MICROPROCESSOR</b>	
Microprocessor	CT216S-T
Clock Frequency	133MHz
SDRAM Memory	16Mbit
<b>Power SUPPLY</b>	
Li_Ion Battery	8.4V/3000mAh
Adapter	OUTPUT :DC 12V/1.5A, INTUPT :100-240VAC 50/60Hz
Power consumption	Max. 10W
<b>PHYSICAL CHARACTERISTICS</b>	
Size (W x D x H)	95*155*45(mm <sup>3</sup> )
Net Weight	0.5KG

## 6. Trouble Shooting

Problem	Possible Causes	What To Do
No display light up	Power switch is not on Run out of batteries Black led is off	Check to make sure power on. Even on adapter. Press B.light key
No sound or picture, but the front panel power light is ON.	AV IN jack insert, but no video input	Pull out AV IN cable
No sound or picture	The satellite dish is not pointing at the satellite.	Adjust the dish. Check the Signal Level in the Antenna Setup menu
Bad picture /Blocking Error	No signal or weak signal	Check the cable connections. LNB and other equipment connected between the LNB and the meter and adjust the dish.
	The satellite dish is not pointing at the satellite	Adjust the dish.
	Signal is too strong	Connect a signal attenuator to the LNB input
	Satellite dish is too small	Change to a larger dish
	LNB noise factor too high.	Change to an LNB with lower noise factor
	The LNB is faulty.	Change the LNB
AV out No picture(Video)	The system is connected by SCART cable and TV is not in AV mode.	Check the UHF channel, fixed in your system and turn the UHF properly.
The key is not working	Out of battery	Even on adapter
	Key blocks	make sure no blocks between the front panel

**Note:** If you still cannot resolve the problem with the above references. Please contact the local dealer or their after-sales service center.